

Research Saves Lives

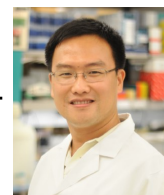
Metastatic breast cancer (MBC) is an advanced stage (stage IV) of breast cancer where tumor cells have **spread** to other parts of the body, such as the bones, liver, lungs or brain. Most breast cancer deaths are a result of metastasis.

In the 1970s, only 10 percent of women survived five years after a diagnosis of MBC. Today, because of research and the discovery of new and more-effective treatments, this has increased to an average of 25 percent. While MBC is treatable, it is not currently curable. Nearly all breast cancer deaths are due to MBC. This is, in part, because we do not know what causes cancer cells to spread.

Komen is dedicated to understanding why metastasis occurs and how to stop it, with more than two-thirds

of its FY18 research grants addressing MBC.

In addition to funding research, Komen is a founding member of the **Metastatic Breast Cancer Alliance** — more than 30 organizations working to unify efforts to improve the lives and outcomes for those living with MBC.



Read how Komen-funded researcher Dr. Xiang Zhang's personal experience with breast cancer is shaping his fight against MBC in the lab.



Learn more about metastatic breast cancer <http://sgk.mn/1wKFOfE>

Our Research Investment 1982–2019

More than **\$210 million** in over **500 research grants** and more than **50 clinical trials** focused on MBC

What We're Investigating



Identifying the genes and processes that cause breast cancer cells to metastasize

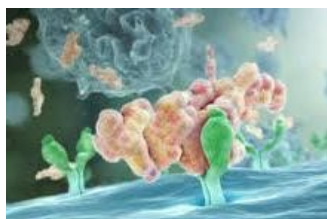
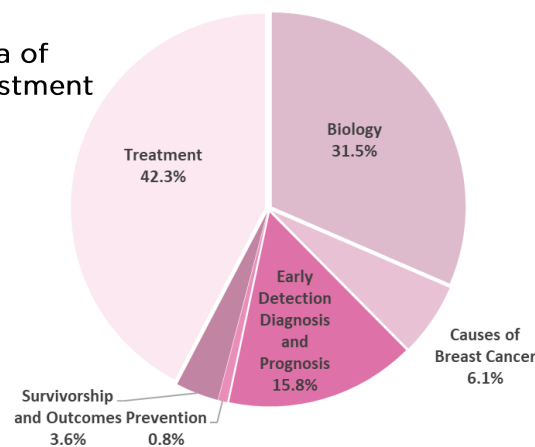


Developing and testing new therapies to both prevent and treat metastatic breast cancer

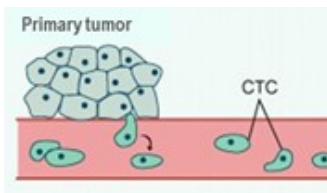


Discovering new methods for predicting risk of metastasis or detecting metastasis early using urine or blood tests or body scans

Topic Area of Total Investment



Read more about the development of Lymphoseek in our Stories of Discovery series. <http://sgk.mn/1hXCYWa>



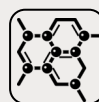
Read more about circulating tumor cells (CTCs) as a biomarker and drug target for MBC in our Science Buzz series. <http://sgk.mn/1eDruid>

What We've Learned

from Komen-funded research



Tilmanocept (Lymphoseek), a novel FDA approved imaging method, can be used to more-effectively detect whether breast cancer has spread to the lymph nodes.



The FDA-approved Src kinase inhibitor—dasatinib— stops stem-like cancer cells that are starting to spread and may be used to prevent metastasis from occurring or treat early MBC. [Read more.](#)



The presence of certain types of circulating tumor cells may be used as a biomarker to predict who is at high risk for metastasis and may serve a drug target to prevent MBC.



Learn more about breast cancer



More Komen-funded Research Stories



Get Involved & Support Komen Research