

A Promise Renewed



Inside Komen: April 1, 2014 – March 31, 2015

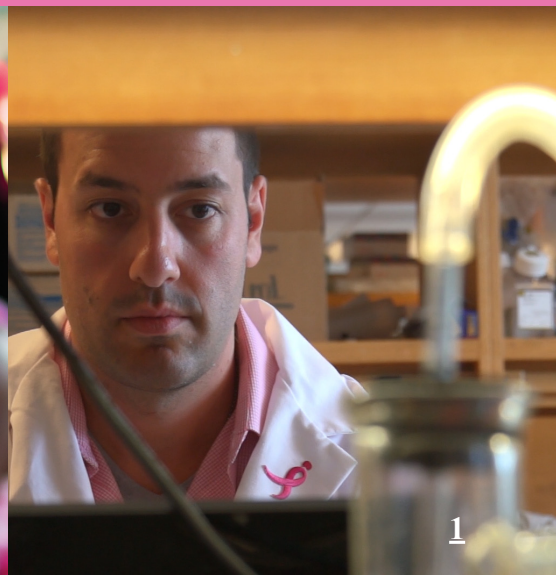
Letter from Judy Salerno:	
A Mission Ignited	2
Mission – Research:	
Moving Science Forward with Passion, Precision and Purpose	4
Mission – Advocacy:	
For Those We’ve Lost and Those We Can Protect	6
Mission – Community Health:	
Making a Difference Where We Live	8
Mission – Global Impact	
Transcending Borders, Beliefs and Languages	10
Fundraising and Stewardship:	
Maximizing Our Collective Impact	12
Consolidated Statement of Financial Position.....	14
Komen Scientific Advisory Board	15
Komen Scholars	16



A Promise Renewed

We refuse to give up. Ever.

Komen has led the fight against breast cancer for more than three decades. Fighting for cures in laboratories. And fighting for women and men everywhere. We've transformed how the world treats and talks about this disease and have helped turn millions of breast cancer patients into breast cancer survivors.



A Mission Ignited

To Our Komen Family,

In 2014, my first full year as president and CEO of Susan G. Komen, I witnessed the power of the Komen Promise in action. More importantly, I saw the need to strengthen that Promise with fresh approaches: with targeted programs to reduce breast cancer deaths by working for health equity, an increased focus on metastatic breast cancer and ensuring the future of breast cancer research through support for scientists just starting their careers.

This is our Promise Renewed.

We have had much to be thankful for in our first 32 years. The work of Susan G. Komen and others has helped reduce breast cancer death rates by more than a third since 1989 in developed countries. Decades of research—much of it funded by Komen—unlocked the secrets of this family of diseases that comprise breast cancer and set the stage for better therapies for the disease.

Thanks to that research and to community health programs, many women and men today are living longer, with more knowledge and more options for treatment than at any time in our history. And from a time of silence and shame around breast cancer, Komen sparked a global community, millions strong, proud, united and vocal in their determination to end this disease.

Years of experience in cancer research, public health and global advocacy have taught us that organizations like Komen have no time to rest on laurels or to celebrate the status quo. Breast cancer remains a cunning killer. It continues to claim 40,000 lives a year in the U.S. and is taking an increasing toll in developing countries. This means that we must be more targeted, and smarter, to loosen breast cancer's grip on the women and men we love and reduce both mortality and incidence of this disease.

In our Fiscal Year 2015, that meant identifying the toughest issues that remain, and setting strategies to overcome them. These include:

- **Achieving Health Equity:** African-American women die of breast cancer at rates 40 percent or higher than white women in the U.S. Access to quality health care for all is a critical component in reducing breast cancer death rates among these women and for all of the medically underserved. To that end, we have launched a national health equity initiative to ensure that no person dies of breast cancer for lack of access to care.
- **Taking on the Toughest Forms of Breast Cancer:** Metastatic breast cancer kills most of the 40,000 women and men who die of breast cancer each year. Nearly half of Komen's new research funding in FY15 was focused on metastatic breast cancer. We have invested \$147 million in research focused on metastatic breast cancer since our founding, more than any other nonprofit, and built new partnerships to address the specific needs of these patients.
- **Ensuring the Next Generation of Breast Cancer Research:** Stagnation in federal cancer research funding is forcing promising young scientists out of breast cancer research and into other fields. We must keep the pipeline of new ideas open and flowing, and to that end, Komen committed nearly half of our research funding this year to young investigators, with a pledge to do so again in 2016, while also funding established scientists and clinicians.
- **Helping where Help is Needed Most:** We looked inward, and strengthened our internal operating systems and structures so that our network of more than 100 Komen Affiliates can continue to be the face, hands and heart of Komen in our communities. Our grassroots network of Affiliates sets us apart from other breast cancer organizations. It served hundreds of thousands of women last year, and the strengthening of our network enhances our ability to serve people who need us for years to come.

We are able to focus our mission and grow our impact, through the support of our donors, partners and friends. And despite

Sino-US Scientific Expert Roundtable Discussion on Breast Cancer Early Screening & Detection



Dr. Judy Salerno, Komen staff, members of the Komen Scientific Advisory Board and Komen Scholars, leading scientists from around the world meet in Beijing.
(See page 11)

economic challenges in the U.S. and abroad, we have carefully stewarded those donations to ensure that on average this fiscal year at least 80 percent of every dollar we spend goes directly to our mission programs.

In the pages that follow, we share the stories and impact of this great organization in just one year. Through a culture of caring, collaboration and innovation, we will continue to lead the way to more research breakthroughs and reduced incidence and mortality from breast cancer – always with the needs of current and future breast cancer patients as our highest priority.

Our Promise is an important one. It is a Promise to all women and men to end breast cancer.

**We will not be satisfied—
and our work will not be done—
until it is fulfilled.**

Judith A. Salerno, M.D., M.S.
President and CEO




Komen-funded research led to the breakthroughs of yesterday – and is opening the door to the breakthroughs of the future. There has never been a more exciting time in breast cancer science.

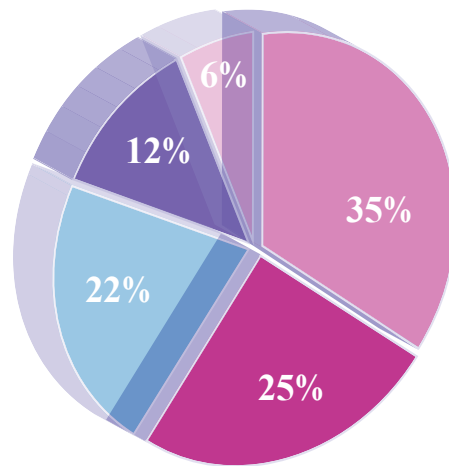
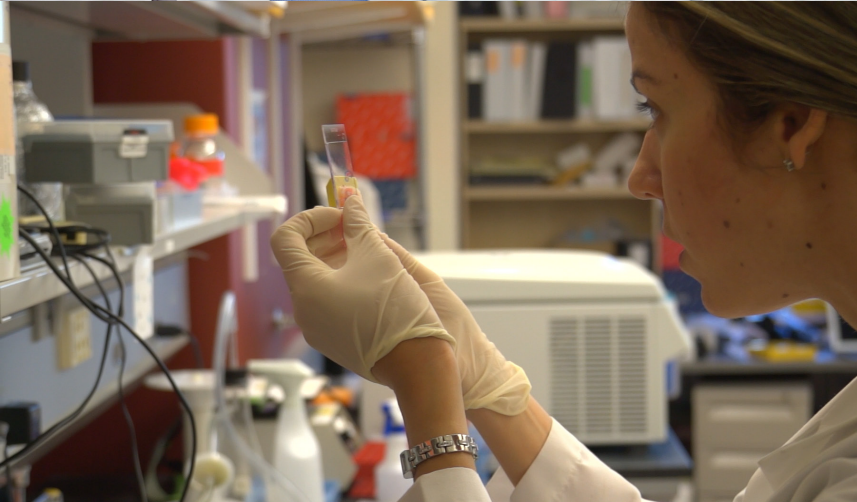
Our Research Impact

Moving Science Forward with Passion, Precision and Purpose

For more than 30 years, our renowned research program, guided by leading experts and passionate advocates, has helped push our understanding of breast cancer forward. With more than \$889 million invested in breast cancer research to date, we are gaining on breast cancer every day. Through our comprehensive approach and commitment to funding early-career investigators, we are ensuring that momentum in breast cancer research, which has saved so many lives, continues.

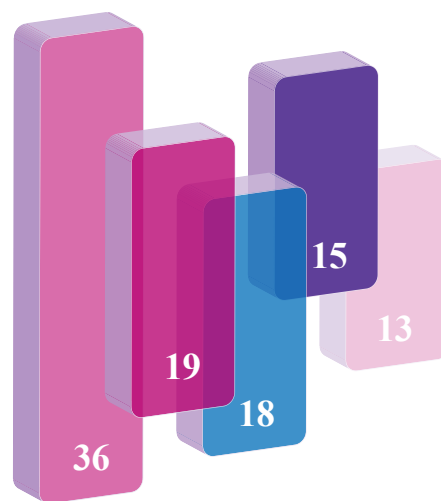
FY15 Highlights

- **Komen awarded \$1.1M to the Komen Tissue Bank (KTB) at the IU Simon Cancer Center**, the only repository in the world for normal breast tissue and matched serum, plasma and DNA. More than 4,000 healthy women have donated tissue and approximately 10,000 have donated blood to the KTB, which is accelerating research into the causes and prevention of breast cancer.
- **Komen provided \$3.75M in support to the Translational Breast Cancer Research Consortium (TBCRC)**, a collaborative network of investigators from 17 U.S. medical centers focused on conducting innovative clinical trials for breast cancer. Since 2006, TBCRC has enrolled more than 3000 patients in 30 clinical trials.
- **Komen-funded research confirmed four subgroups of HER2+ breast cancer with different molecular characteristics** which can be used to personalize treatment. 
- **Landmark report from Metastatic Breast Cancer Alliance** (Komen is a founding member) found MBC research to be underfunded and identified opportunities to close gaps in understanding MBC and support for people living with MBC. 
- **Komen partnered with the Dr. Susan Love Foundation** to fund \$50K in pilot grants to researchers using next-generation technology to study the fundamental question, *“How does breast cancer develop?”* 



2015 Research Grants Awarded:

- 35% Treatment
- 25% Cancer Control, Survivorship and Outcomes
- 22% Biology
- 12% Early Detection, Diagnosis and Prognosis
- 6% Causes of Breast Cancer
- Additionally, nine grants to global and community health research programs



2015 Research Grants

Komen grants addressing the most challenging areas in breast cancer research, including:

- 36 in Metastasis
- 19 in Triple Negative
- 18 in Drug Resistance
- 15 in Health Inequities
- 13 in Novel Therapies

Our Advocacy Impact

For Those We've Lost and Those We Can Protect

More than 230,000 cases of breast cancer will be diagnosed in the U.S. in 2015. Each of those women and men, along with their families and friends, and the more than 3 million breast cancer survivors in the U.S. today, have concerns about timely access to quality care, getting the best treatment and what the future holds. For more than 30 years, Komen has worked to make sure their voices are heard, fighting for access to affordable, high-quality breast health and cancer care services and ensure that federal research funding remains a priority.

FY15 Highlights

- **Komen, Young Survival Coalition and Living Beyond Breast Cancer** supported the reauthorization of the Education and Awareness Requires Learning Young (EARLY) Act.
- **Komen supported the Patients' Access to Treatments Act.**
- **The seven Susan G. Komen Affiliates in California** joined together to announce an intensive, two-year, statewide initiative focusing on African-American women's breast health.





“Patients and their physicians should be free to make treatment decisions based on what is best for that patient rather than on financial considerations. And this legislation will ensure cancer patients receive fair and equal access to both oral and IV anti-cancer medication.”

— Komen South Dakota Executive Director Mary Kolsrud, on the signing into law of Senate Bill 101

We believe that Komen—as a patient advocacy organization with first-hand knowledge of how breast cancer touches local communities—must engage policymakers and government as partners in our efforts to end breast cancer.



Our Community Health Impact

Making a Difference Where We Live

Ending breast cancer requires more than research: it also requires an investment in people and resources that can help women and men *today*. Providing insurance co-pays for low-income women and men; medical supplies for those who are financially stretched; patient navigation programs to help women and men through the health care system; help with rent payments and groceries for those whose cancer has created a medical *and financial* crisis.

Sometimes, a person facing breast cancer just needs a knowledgeable friend who can listen and assist. That's where Komen comes in.

Last year, Komen helped more than 30,000 women and men with the financial, emotional and social issues that accompany a breast cancer diagnosis. Komen paid for screenings for more than 300,000 women and men who wouldn't otherwise be able to afford them. Komen Affiliates were out in communities nationwide, educating women about the signs and symptoms of breast cancer, how to reduce their risk, and what to expect once a diagnosis is made. Komen's website made breast cancer information accessible to millions.

“When I had no way to help myself, Komen’s door opened for me and saved my life.”

– Ruth, age 33, breast cancer survivor (*courtesy Komen Orange County*)





FY15 Highlights – Treatment

- Komen funded patient navigation programs in 16 communities, giving women knowledgeable resources to guide them through the health care system.
- With partners at CancerCare and the Patient Advocate Foundation, Komen made it possible for nearly 20,000 people to receive financial, medical and/or psychosocial support. Komen has funded more than \$13 million to these programs over the past 7 years.



FY15 Highlights – Screening

- Last year, more than 300,000 women and men received a free or reduced-cost breast screening through Komen programs.
- Komen awarded nearly \$400,000 for two new community grants to reach low-income, minority and uninsured women who fall through the health care gaps in the Washington, D.C. metro area, where death rates from breast cancer continue to rank above national averages.



FY15 Highlights – Education

- With more than *7 million* page views in the About Breast Cancer section alone, people received the breast health information they needed from Komen's website – komen.org – which launched a new design in 2014.
- In communities from Washington, D.C. to Honolulu, Komen advocates reached out to women of color, uninsured and medically vulnerable women—who are at the greatest risk for late-stage diagnosis—to educate and offer assistance.
- Through the generous support of Walgreens and its customers, Komen has provided funding to 26 Komen Affiliates (totaling more than \$1.5 million) to develop and deploy breast health and breast cancer programs in their service areas.
- Komen's toll-free national Breast Care Helpline connected more than 14,000 callers with vital breast health information, support and resources.

Our Global Impact

Transcending Borders, Beliefs and Languages

Breast cancer is the most common women's cancer in the world — and growing in countries least able to deal with it. In just three decades, the number of new breast cancer cases has doubled, with the highest increases seen throughout North and Western sub-Saharan Africa, the Middle East, Southeast Asia and Central Latin America. Further, breast cancer remains the leading cause of cancer death in women in low-resource countries around the world.

We believe that where a woman lives should not determine *whether* she lives. So we're fighting breast cancer in every corner of the world — in partnership with government agencies, non-governmental organizations (NGOs) and corporate partners. Together we're providing health systems assessments, education, early detection and treatment programs in our efforts to save lives and reduce the devastation of breast cancer.



FY15 Highlights – Global Impact

- **In partnership with the Caterpillar Foundation, Komen funded programs in Brazil, Panama and Mexico that have, since 2011,** trained 2,500 community health workers and medical providers, and reached more than 50,000 community members through breast self-awareness and breast cancer educational workshops.
- **Through F15, Komen, in partnership with GE Healthymagination, has launched programs in China and Saudi Arabia** to develop culturally appropriate breast health education materials, educate community members, train medical providers, and support breast health and breast cancer education events.
- **In Africa,** Komen-funded programs and partnerships helped thousands of women facing breast cancer in regions where resources are scarce. Komen funded the establishment of two breast cancer clinics in Zambia, and supported screening of 6,200 women as a founding member of the Pink Ribbon Red Ribbon partnership, affiliated with the George W. Bush Institute and government/non-government organizations.

In just three decades, the number of new breast cancer cases has doubled worldwide, with the highest increases seen throughout North and Western sub-Saharan Africa, the Middle East, Southeast Asia and Central America.



Fundraising and Stewardship

Maximizing Our Collective Impact

Our work would not be possible without the generous support of donors, partners, Race participants, 3-Day walkers and every person who baked, bowled, crafted, flew and went above and beyond to advance our vision of a world without breast cancer. Our fight is their fight, and together, we are making an impact in the lives of women and men facing breast cancer today, and investing in a future where no one fears the words, “you have breast cancer.”

Fueling that mission is a culture of transparency and stewardship. We are focused on the task at hand, and proud to report that, for the 11th year in a row, on average at least 80 cents of every dollar was invested in mission programs.

FY15 Highlights

- The **Race for the Cure®** series raised \$86.4 million with 154 Races around the globe.
- **Longtime Komen Partner Bank of America** became the Presenting Sponsor of the Race for the Cure series and the Komen 3-Day, signing on until 2020.
- **New Balance** became the T-shirt sponsor of Race for the Cure and also committed to continuing their sponsorship of Race and the Lace Up for the Cure CRM program through 2018.
- **Walgreens customers** raised \$3.5M through the at-register program, helping to fund breast cancer programs in 16 communities, as well as the Treatment Assistance Program and the Komen helpline.
- **Ballantyne Rally** (largest Rally for the Cure event in the country) continued their incredible success by raising nearly \$200,000 in Charlotte, NC.
- **Komen and WWE** teamed up for National Women's Health Week to make women's health a priority.

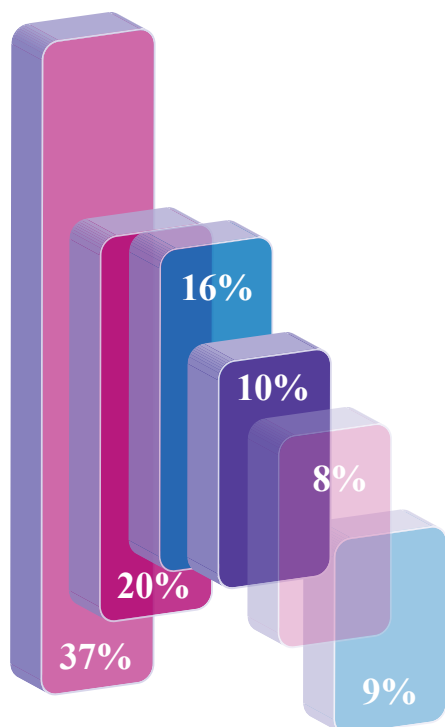




“One in eight women in the U.S. is diagnosed with breast cancer in her lifetime. That’s an incredibly scary statistic. In my family, we have been touched twice. However, this is not about me. This is about the more than 3 million breast cancer survivors in the U.S. today, and the fact that this is still the second leading cause of cancer-related death among women in the U.S.”

– Pippa Mann, *IndyCar driver and Komen partner*





Total Spending FY15

- 37% Education
- 20% Research
- 16% Screening
- 10% Fundraising
- 9% Administration
- 8% Treatment

Consolidated Statement of Financial Position	As of March 31,	
	2014	2015
Assets:		
Cash and cash equivalents	109,297,704	154,493,674
Investments	248,921,096	150,955,835
Receivables	43,879,176	39,969,851
Prepaid expense and other assets	2,244,790	3,867,213
Property and equipment, net	1,290,816	2,798,585
Total Assets	<u>405,633,582</u>	<u>352,085,158</u>
Liabilities:		
Accounts payable, accrued expenses, and other payables	9,047,813	7,806,906
Deferred revenue and rent	3,126,043	2,560,573
Grants payable, net	197,635,702	164,476,949
Total Liabilities	<u>209,809,558</u>	<u>174,844,428</u>
Net Assets:		
Unrestricted - undesignated	134,678,879	119,868,140
Unrestricted - board designated	1,000,000	1,000,000
Total unrestricted	<u>135,678,879</u>	<u>120,868,140</u>
Temporarily restricted	59,820,145	56,047,590
Permanently restricted	325,000	325,000
Total Net Assets	<u>195,824,024</u>	<u>177,240,730</u>
Total Liabilities and Net Assets	<u>405,633,582</u>	<u>352,085,158</u>

Consolidated Statement of Activities	Fiscal Year Ended March 31,	
	2014	2015
Public support and revenue:		
Contributions	112,818,654	117,880,939
Komen Race for the Cure & Breast Cancer 3 Day	180,440,371	149,489,011
Less: Direct benefit to donors and sponsors	<u>(27,396,500)</u>	<u>(25,130,890)</u>
Net Public Support	265,862,525	242,239,060
Revenue:		
Investment Income	21,109,967	7,521,315
Other Income	436,777	515,987
Total Revenue	<u>21,546,744</u>	<u>8,037,302</u>
Total Net Public Support and Revenue:	287,409,269	250,276,362
Expenses:		
Program Services	217,779,902	216,147,708
Management and General	23,258,997	20,719,400
Fundraising	<u>36,988,727</u>	<u>31,992,548</u>
Total Expenses	278,027,626	268,859,656
Change in net assets	9,381,643	(18,583,294)
Net Assets, beginning of year	<u>186,442,381</u>	<u>195,824,024</u>
Net assets end of year	<u>195,824,024</u>	<u>177,240,730</u>

Scientific Advisory Board

The Scientific Advisory Board (SAB) provides strategic guidance and direction for our research and scientific programs, and plays a key role in guiding and prioritizing Komen's global research investment. The SAB is led by the chief scientific advisors and serves as the executive committee of the Komen Scholars.

Scientific Advisory Board

George Sledge, Jr., M.D., Chief Scientific Advisor

Stanford University School of Medicine
Stanford, CA

Eric Winer, M.D., Chief Scientific Advisor

Dana-Farber Cancer Institute
Boston, MA

Carlos Arteaga, M.D.

Vanderbilt-Ingram Cancer Center
Nashville, TN

Myles Brown, M.D.

Dana-Farber Cancer Institute
Boston, MA

Powel Brown, M.D., Ph.D.

The University of Texas M.D. Anderson Cancer Center
Houston, TX

Karen Gelmon, M.D., F.R.C.P.C.

British Columbia Cancer Agency
Vancouver, Canada

Cheryl Jernigan, C.P.A., F.A.C.H.E.

Advocate in Science
Komen Greater Kansas City Affiliate
Kansas City, MO

Amelie Ramirez, Dr. P.H.

The University of Texas Health Science Center at San Antonio
San Antonio, TX



Komen Scholars

The Komen Scholars are an advisory group of 60 distinguished leaders in breast cancer research and advocacy. Representing more than 32 institutions in seven countries, their expertise spans everything from clinical research and laboratory research to pathology, prevention, radiation oncology, surgery and other disciplines and specialties. They contribute to our programs, activities and events in many ways—most notably by leading and participating as reviewers in our scientific peer review process—and act as our ambassadors in communities around the U.S. and the world.

Several of the Komen Scholars are Advocates in Science — patient advocates who ensure that the unique perspectives of those affected by breast cancer are fully integrated into decisions at every step of the research process.

Komen Scholars

Benjamin Anderson, M.D.

University of Washington School of Medicine
Seattle, WA

Alan Ashworth Ph.D., F.R.S.

Institute of Cancer Research
London, England

Sunil Badve, M.D., F.R.C.Path.

Indiana University Cancer Center
Indianapolis, IN

Kimberly Blackwell, M.D.

Duke University School of Medicine
Durham, NC

Gerard Blobe, M.D., Ph.D.

Duke University School of Medicine
Durham, NC

Melissa Bondy, Ph.D.

Baylor College of Medicine
Houston, TX

Joan Brugge, Ph.D.

Harvard Medical School
Boston, MA

Lisa Carey, M.D.

UNC Lineberger Cancer Center
Chapel Hill, NC

E. Claire Dees, M.D., Sc.M.

UNC Lineberger Cancer Center
Chapel Hill, NC

Angelo Di Leo, M.D., Ph.D.

Hospital of Prato, Istituto Toscano
Tumori
Prato, Italy

Nora Disis, M.D.

The University of Washington
Medical School
Seattle, WA

Susan Domchek, M.D.

The University of Pennsylvania
School of Medicine
Philadelphia, PA

Karen Durham

Advocate in Science
Komen Tyler Affiliate
Tyler, TX

Matthew Ellis, M.B., B.Chir, Ph.D.

Baylor College of Medicine
Houston, TX

Carol Fabian, M.D.

University of Kansas Medical Center
Westwood, KS

Sandra Finestone, Psy.D.

Advocate in Science
Inland Empire and Orange County
Affiliates
Costa Mesa, CA

William Foulkes, M.B.BS., Ph.D.

McGill University
Montreal, Canada

Patricia Ganz, M.D.

University of California, Los Angeles
Los Angeles, CA

Judy Garber, M.D., M.P.H.

Dana-Farber Cancer Institute
Boston, MA

Julie Gralow, M.D.

University of Washington School of
Medicine
Seattle, WA

Joe Gray, Ph.D.

Oregon Health and Science
University
Portland, Oregon

Theresa Guise, M.D.

Indiana University School of
Medicine
Indianapolis, IN

Susan Hankinson, R.N., M.P.H, Sc.D.

The University of Massachusetts,
Amherst
Amherst, MA

Daniel Hayes, M.D.

The University of Michigan
Comprehensive Cancer Center
Ann Arbor, MI

Mien-Chie Hung, Ph.D.

The University of Texas M.D.
Anderson Cancer Center
Houston, TX

Nola Hylton, Ph.D.

University of California, San
Francisco
San Francisco, CA

Nancy Hynes, Ph.D.

Friedrich Miescher Institute for
Biomedical Research
Basel, Switzerland

Judy Johnson, M.B.A.

Advocate in Science
Komen St. Louis Affiliate
St. Louis, MO

Komen Scholars

Komen Scholars cont.

Peggy Johnson

Advocate in Science
Komen Kansas Affiliate
Wichita, KS

V. Craig Jordan, OBE, Ph.D., D.Sc., F.Med.Sci.

The University of Texas M.D.
Anderson Cancer Center
Houston, TX

Bella Kaufman, M.D.

Chaim Sheba Medical Center
Ramat Gan, Israel

Mary-Claire King, Ph.D.

University of Washington
Seattle, WA

Ian Krop, M.D., Ph.D.

Dana-Farber Cancer Institute
Boston, MA

Adrian Lee, Ph.D.

University of Pittsburgh Cancer
Institute
Pittsburgh, PA

David Livingston, M.D.

Dana-Farber Cancer Institute
Boston, MA

David Mankoff, M.D., Ph.D.

The University of Pennsylvania
School of Medicine
Philadelphia, PA

Funda Meric-Bernstam, M.D.

The University of Texas M.D.
Anderson Cancer Center
Houston, TX

Kathy Miller, M.D.

Indiana University Cancer Center
Indianapolis, IN

Gordon Mills, M.D., Ph.D.

The University of Texas M.D.
Anderson Cancer Center
Houston, TX

Harikrishna Nakshatri, B.V.Sc., Ph.D.

Indiana University Simon Cancer
Center
Indianapolis, IN

Olufunmilayo Olopade, M.D.

University of Chicago Medical Center
Chicago, IL

Bert O'Malley, M.D.

Baylor College of Medicine
Houston, TX

Ramon Parsons, M.D., Ph.D.

Mount Sinai School of Medicine
New York, NY

Ann Partridge, M.D., M.P.H

Dana-Farber Cancer Institute
Boston, MA

Rena Pasick, Dr. P.H.

University of California, San
Francisco
San Francisco, CA

Lori Pierce, M.D.

University of Michigan
Comprehensive Cancer Center
Ann Arbor, MI

Jennifer Pietenpol, Ph.D.

Vanderbilt-Ingram Cancer Center
Nashville, TN

Jeffrey Rosen, Ph.D.

Baylor College of Medicine
Houston, TX

Bryan Schneider, M.D.

Indiana University Simon Cancer
Center
Indianapolis, IN

Christos Sotiriou, M.D., Ph.D.

Jules Bordet Institute
Brussels, Belgium

Patricia Spears

Advocate in Science
Komen NC Triangle to the Coast
Affiliate
Morrisville, NC

Neil Spector, M.D.

Duke University School of Medicine
Durham, NC

Vered Stearns, M.D.

Sidney Kimmel Comprehensive
Cancer Center
Baltimore, MD

W. Fraser Symmans, M.D.

The University of Texas M.D.
Anderson Cancer Center
Houston, TX

Geoffrey Wahl, Ph.D.

The Salk Institute for Biological
Studies
La Jolla, CA

Danny Welch, Ph.D.

University of Kansas Cancer Center
Kansas City, KS

Julia White, M.D.

The Ohio State University
Comprehensive Cancer Center
Columbus, OH

Antonio Wolff, M.D.

Sidney Kimmel Comprehensive
Cancer Center
Baltimore, MD

Kimberly Wright

Advocate in Science
Komen Maryland Affiliate
Towson, MD

Douglas Yee, M.D.

Masonic Cancer Center, University of
Minnesota
Minneapolis, MN



“We could give no greater gift to our children than using novel prevention approaches to consign breast cancer to the dustbin of medical history.”

– Komen Chief Scientific Advisor Dr. George Sledge

